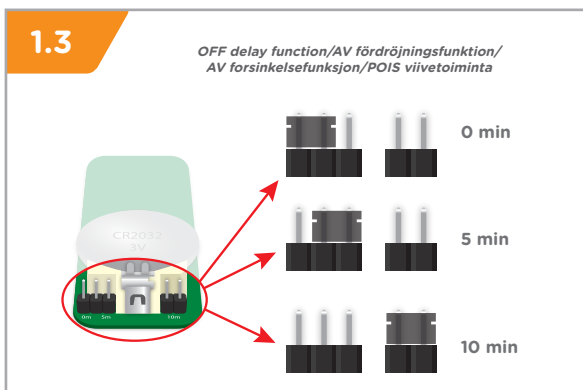
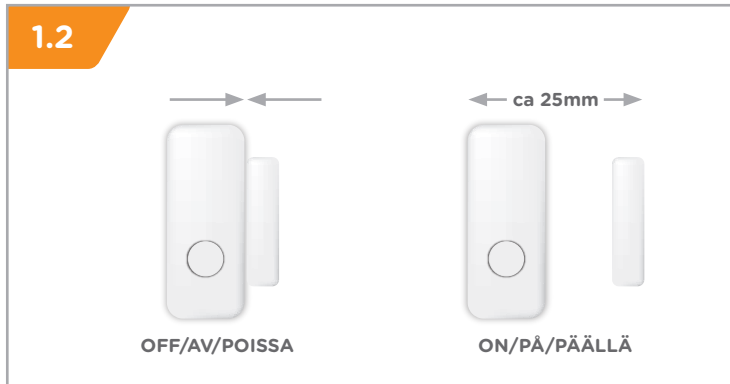


# 1. INSTALLATION

1. INSTALLASJON

1. INSTALLATION

1. ASENNUS



**Explore/Upptäck/Oppdag/Lisätietoja:**  
[www.proovesmart.com](http://www.proovesmart.com)

Use the Event function for more advanced control of your sensor.

Använd Event-funktionen för ännu mer avancerad kontroll av din sensor.

Bruk Event-funksjonen for enda mer avansert kontroll over sensoren.

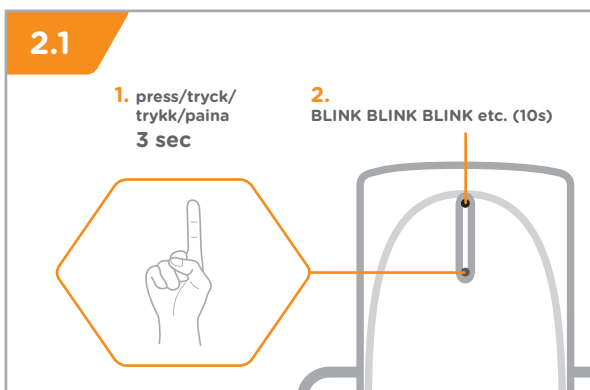
Käytä Event-toimintoa anturin monipuolisempaan hallintaan.

# 2. CONNECT SENSOR TO RECEIVER

2. KOBLE SENSOR TIL MOTTAKER

2. KOPPLA SENSOR TILL MOTTAGARE

2. LIITÄ ANTURI VASTAANOTTIMEEN



## Specifications/Specifikationer/Specifikasjoner/Tekniset tiedot

Range/Räckvidd/Rekkevidde/Kantomatka	ca 30m
Protection class/Skyddsklass/Verneklasse/Suojausluokka	IP20
Frequency/Frekvens/Frekvens/Taajuus	433.92MHz
Battery/Batteri/Batteri/Paristo	1x CR2032 3V

### 3. CONNECT SENSOR TO TELLSTICK NET

#### 3. KOPPLA SENSOR TILL TELLSTICK NET

#### 3. KOBLE SENSOR TIL TELLSTICK NET

#### 3. LIITÄ ANTURI TELLSTICK NET:iin

**3.1** start.tellus.com

start.tellus.com



**3.2** login.tellus.com

E-mail address:

Password:


**Login**

**3.3 - 3.8 >>>**

**3.3** start.tellus.com

start.tellus.com

Control  
**Devices**



**3.4** start.tellus.com

Add a new device



**3.5** start.tellus.com

Device name:

Type:  Device  Group

Device Type:

**Magnetic switch**


\* Any name may be used/Valfritt namn/Valgfritt namn/Vapaavalintainen nimi

**3.6** start.tellus.com

Group

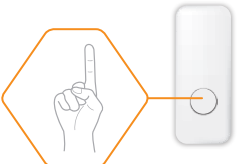
Magnetic switch

**Scan Remote**



**3.7**

Push within/tryck inom/  
trykk innen/paina kuluessa  
10 sec



**3.8** start.tellus.com

**Save**

